



**ALASKA DIVISION OF HOMELAND SECURITY &  
EMERGENCY MANAGEMENT**



**SITUATION REPORT 21-347 • DECEMBER 13, 2021**

Toll-Free 1.800.478.2337

Anchorage Area 907.428.7000

SEOC 907.428.7100

<p><b><u>SEOC Preparedness Level</u></b> Level 1 – Normal Operations</p>	<p><a href="http://ready.alaska.gov">http://ready.alaska.gov</a></p>	<p><b><u>National Terrorism Advisory System:</u></b> Read the updated NTAS Bulletin <a href="#">here</a></p>
<p><b><u>Maritime Security (MARSEC)</u></b> Level:1-Minimum Appropriate Security Measures</p>	<p><b>WHO Novel Coronavirus Pandemic (COVID-19):</b>  <a href="#">2019 Novel Coronavirus</a></p>	<p><b><u>Alaska Military Installation Force Protection Level:</u></b> FPCON Bravo</p>

(Significant changes from previous situation reports are in red.)

**Significant Issues:**

The SEOC worked with the community of Saint George over the weekend after they experienced power generation issues due to fuel problems and malfunctioning equipment. Power has been restored at this time and the SEOC is continuing to assist the community with its recovery from this event.

**Threat Level Changes:**

None

**State of Alaska Department of Health and Social Services (DHSS)**

DHSS is now leading the State of Alaska COVID-19 Recovery through Department Operations, supported by SEOC and other state departments as required.

For current COVID-19 information, see:

<https://covid19.alaska.gov/>

<https://www.cdc.gov/coronavirus/2019-ncov/index.html>

**NTAS BULLETIN**

To read current or expired advisories, click the link below:

<https://www.dhs.gov/national-terrorism-advisory-system>

**Travel Alerts and Conditions**

For current driving conditions dial 511 or link to <http://511.alaska.gov/>

**Barry Arm Landslide / Tsunami Risk**

For the latest information on the Barry Arm Landslide and Tsunami risk, click here:

[DGGs Barry Arm Landslide and Tsunami Hazard](#)

**Recent Earthquakes**

USGS Earthquake Information: <http://earthquake.usgs.gov/>

National Tsunami Warning Center: <http://tsunami.gov/>

## Alaska Volcanoes

**Davidof** Alert Level: **Advisory** and Aviation Color Code: **Yellow**

**Great Sitkin** Alert Level: **Watch** and Aviation Color Code: **Orange**

**Pavlof** Alert Level: **Watch** and Aviation Color Code: **Orange**

**Semisopchnoi** Alert Level: **Watch** and Aviation Color Code: **Orange**

For Alaska Volcano updates, go to: <https://www.avo.alaska.edu/>

## Air Quality Index (AQI) Advisories

A Stage 1 Alert is in effect for the Fairbanks Zone until noon today

A Stage 2 Alert is in effect for the North Pole Zone until noon today

For the most up to date Air Quality Index Advisories:

<http://dec.alaska.gov/Applications/Air/airtoolsweb/Home/Index>

## Spills of Oil and Hazardous Substances

The ADEC Spill Prevention and Response page is located at:

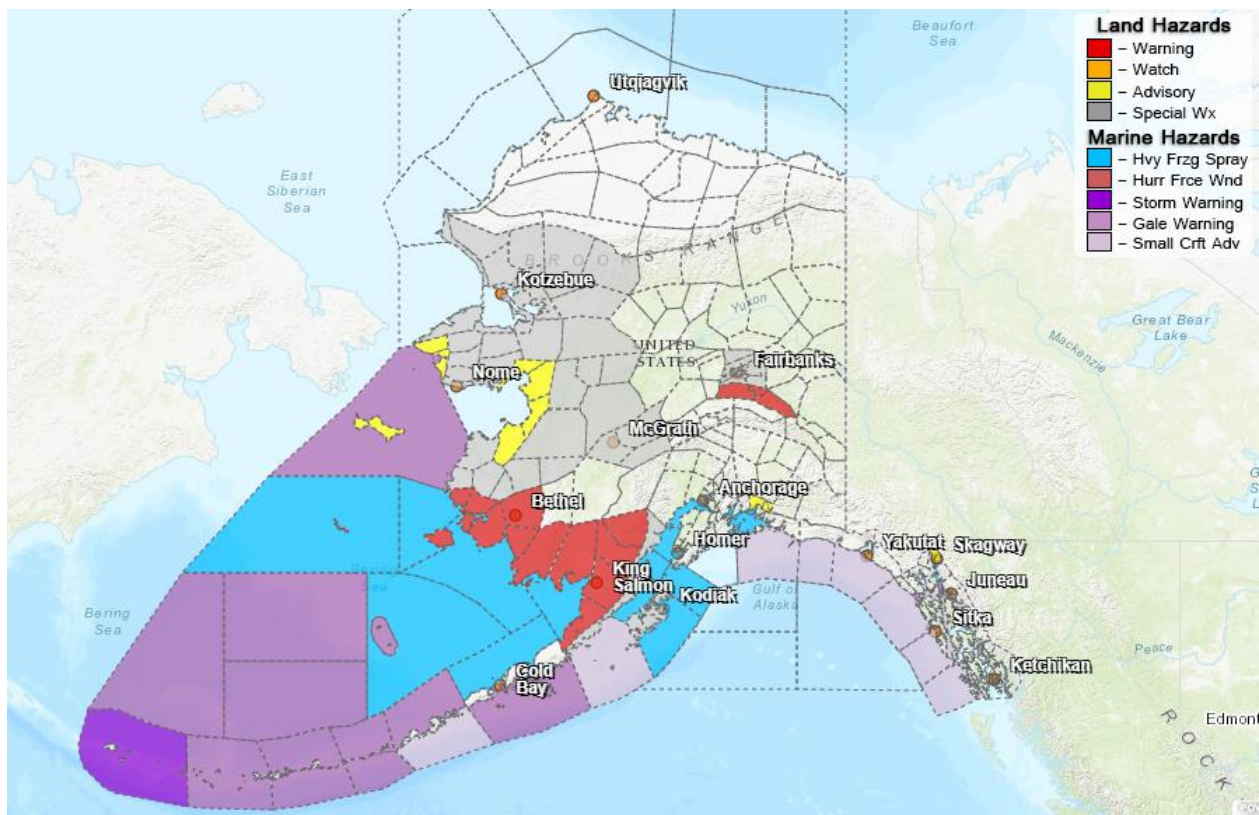
<http://dec.alaska.gov/spar/ppr/spill-information/response/>

## Alaska Cyber Security Information

State Employees may sign up for cyber security notifications and alerts at

<https://oit.alaska.gov/security>

## Significant Weather:



Blizzard Warnings are in effect for the following areas:

- Kuskokwim Delta Coast until 6:00 P.M. today. 1 to 3 inches of snow.
- Bristol Bay northwest of Dillingham until 9:00 P.M. today. 1 to 5 inches of snow.

Wind Chill Warning and Advisories are in effect for the following areas:

- Northeast Prince William Sound until 1:00 P.M. today.
- Deltana and Tanana Flats until 3:00 A.M. tomorrow.
- Eastern Norton Sound and Nulato Hill until 6:00 A.M. tomorrow.
- St. Lawrence Island and Bering Strait Coast until 6:00 A.M. tomorrow.
- Klondike Highway and White Pass until 9:00 A.M. tomorrow.

Special Weather Statements have been issued for the following areas:

- Kodiak Island. 3 to 6 inches of snow and winds gusting to 25mph are possible this afternoon through tomorrow morning.
- Western Coastal region. A strong storm moving into the Bering Sea on Tuesday into Wednesday will likely bring blizzard conditions to St. Lawrence Island and the Yukon Delta Tuesday night and the remainder of the coast and western interior by Wednesday night into Thursday.

For more information and the most current weather, Watches / Warnings / Advisories go to:

<http://www.weather.gov/arh>

### **Avalanche Forecast:**



There are areas near Valdez, the Richardson Highway, Chilkat Lake and Haines with considerable risk; and near Cordova with moderate risk.

Check the Avalanche Forecast Center closest to your area for the most up to date information on avalanche potential. <https://alaskasnow.org/?sfw=pass1639069943> or <https://www.weather.gov/afc/avalancheweather>

**The Next Situation Report:** will be 14 December 2021. A significant change in the situation or the threat level will prompt an interim report.

This report is posted on the internet at <https://ready.alaska.gov/sitrep>. To register for email distribution, go to <http://list.state.ak.us/mailman/listinfo/dhsem.situation.report>. Direct questions regarding this report to the SEOC at 907-428-7100 or [seoc@alaska.gov](mailto:seoc@alaska.gov)